

Cataraqui Source Protection Municipal Update – October 2014

(Prepared by CRCA staff)

Plan Poised for Approval

After years of technical work, consultation and policy development it is expected that the Cataraqui Source Protection Plan will be approved November/December of this year - we look forward to sharing the good news. Please note that when the Ontario Minister of the Environment and Climate Change announces plan approval he will also identify an effective date. We believe that the effective date will be April 1, 2015. **Please let us know if this timing could pose a problem for your municipality.** Based on our estimation of preparedness, Cataraqui Region Conservation Authority (CRCA) staff think that an April 1st effective date would be appropriate.

The neighbouring Mississippi-Rideau and Quinte regions received approval in August and September and their plans will become effective on January 1, 2015.

Remarks by the Minister of the Environment and Climate Change

A Source Protection Committee Chairs' meeting was held in Toronto on October 23rd and 24th. We were fortunate that the Honourable Glen Murray, Ministry of the Environment and Climate Change (MOECC), addressed the group. He provided an overview of the Ministry's intended focus for the next fiscal year. The 2014 mandate letter for Environment and Climate Change can be viewed by following this link: <http://www.ontario.ca/government/2014-mandate-letter-environment-and-climate-change>. The Minister stressed the importance of source protection, commended the efforts to date and noted that there will be continuing support for the next fiscal year.

New Implementation Resources

The implementation phase of source protection requires active involvement by local stakeholders. As such, additional resources are required and will soon be made available on the www.cleanwatercataraqui.ca website.

Cataraqui Source Protection Primers are being finalized and will provide a concise local summary of both the Cataraqui Source Protection Plan and Part IV Policy Implementation. They are primarily intended for municipal and public health unit staff, but will also be helpful publications to share with the general public.

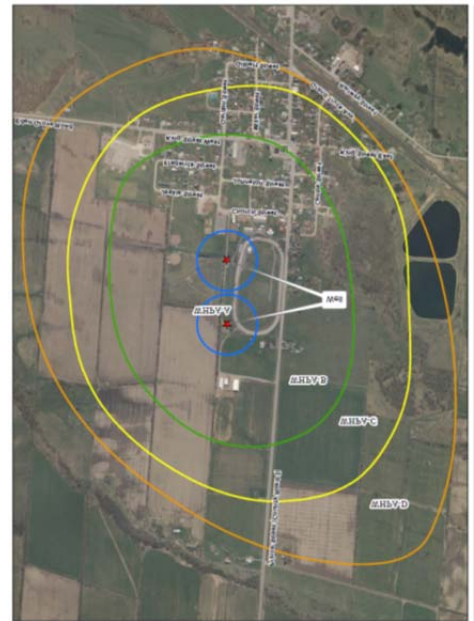
Clickable Maps are nearing completion.

A map with an air photo background for each of the vulnerable areas and zones will be posted. The image on the left is an example map for the Lansdowne Wellhead Protection Area.

There will be two streams of information that will present all relevant source protection requirements for either:

1. The general public that will be less detailed; and
2. Those interested in how source protection policies affect municipal decisions.

Tailored fact sheets will appear when a particular zone is selected.



Preparing for Local Implementation

As you may be aware, there are two active local source protection working groups for municipal and public health representatives. Membership is open and materials, including meeting notes, are shared broadly. If you are interested to join a working group or would like to receive meeting notes, please contact us.

Meetings were held for both groups in September to continue Risk Management Office preparations and to collaborate on land use planning for source protection. Some key outcomes from each meeting are outlined below:

Municipal Part IV Working Group (Meeting #3 September 23, 2014)

Regional Risk Management Office

- All agreements to transfer enforcement responsibility to the Cataraqui Source Protection Authority / CRCA have been signed or will follow the municipal election
- The Cataraqui Source Protection Authority appointed lead and support risk management officials/inspectors at its October 22nd meeting

Township of Leeds and the Thousand Islands Risk Management Office

- The Township of Leeds and the Thousand Islands (TLTI) has appointed a risk management official/inspector to provide risk management services within the Lansdowne Wellhead Protection Area and the Township portion of James W. King (Gananoque) Intake Protection Zone
- CRCA work with TLTI to help ensure a consistent approach. For example, Part IV Service Delivery Procedures are being prepared by CRCA staff to guide regional risk management office activities and will be made available to the Township for use and adaptation

Resources

- A Part IV training kit is being prepared by the CRCA for municipal staff that are likely to encounter related questions from the general public. This material will be vetted by the Working Group and offered to all municipalities with Part IV policies before it is finalized

- A new streamlined restricted land use screening process is being designed based on helpful municipal comments

Next Meeting: Planned for late November or early December (a teleconference may be suitable)

Municipal Land Use Planning Working Group (Meeting #1 September 22, 2014)

First Meeting Focus

- integrating source protection with land use planning policies (tiered approach),
- the need to prepare / adapt guidelines for groundwater assessment, and
- the challenge of working around karst formations (e.g. caves, sinkholes).

Follow-up

- Meeting notes and the draft tiered strategy to include source protection in planning documents and processes have been sent to our land use planning contacts at all municipalities for further input.
- The CRCA will conduct some background research on developing the groundwater assessment guidance (for a land use planning policy in the source protection plan).

Next Meeting: Planned for mid-November (will be an in-person gathering)

Education and Outreach

The MOECC has prepared a Resource Catalogue of education and outreach materials, which is available at <http://www.conservationontario.ca/library?view=category&id=66>.

The CRCA provided an education and outreach proposal on September 17th. At that time we anticipated that municipalities with Source Protection Municipal Implementation Fund (SPMIF) grants might want to use some of their funds for that purpose. Much of the proposed work was intended to implement the general education and outreach policy 4.4.2-CW in the source protection plan. Publications, workshops and other tools were suggested. However, in subsequent dialogue with the MOECC, CRCA staff learned that work under that policy is ineligible for the grants. This is because specific municipalities are not named in the text of that policy (i.e. they are not bound to act).

Other education and outreach work remains eligible under the SPMIF criteria where a municipality is specifically required to undertake related efforts that address significant drinking water threats. We will continue to support municipalities with planning and progress reporting (first report due December 15th) for the SPMIF grants.

Questions or Comments?

Holly Evans

Phone: 613-546-4228 x233 or 1-877-956-2722

Email: hevans@crca.ca

Web: www.cleanwatercataraqui.ca