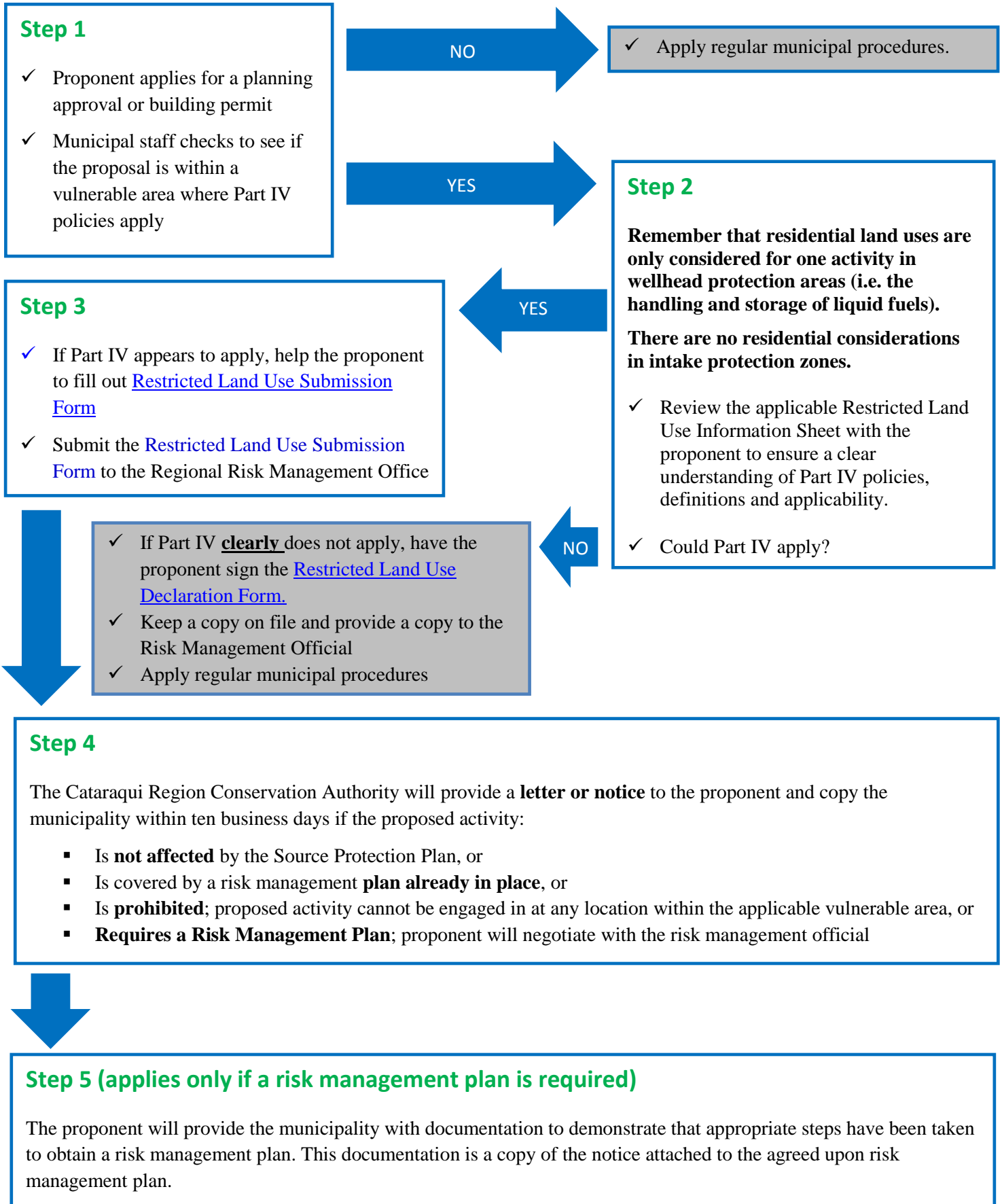


Cataraqui Source Protection Area – Restricted Land Use Workflow



Regional Risk Management Office – Cataraqui Region Conservation Authority

Phone: 613-546-4228 x233 (toll free) 877-956-2722 Fax: 613-547-6474

Website: www.cleanwatercataraqui.ca

Staff Contacts

Holly Evans, Lead Risk Management Official/Inspector Andrew Schmidt, Risk Management Official/Inspector

Phone ext.: 233

Phone ext.: 224

Email: hevans@crca.ca

Email: aschmidt@crca.ca