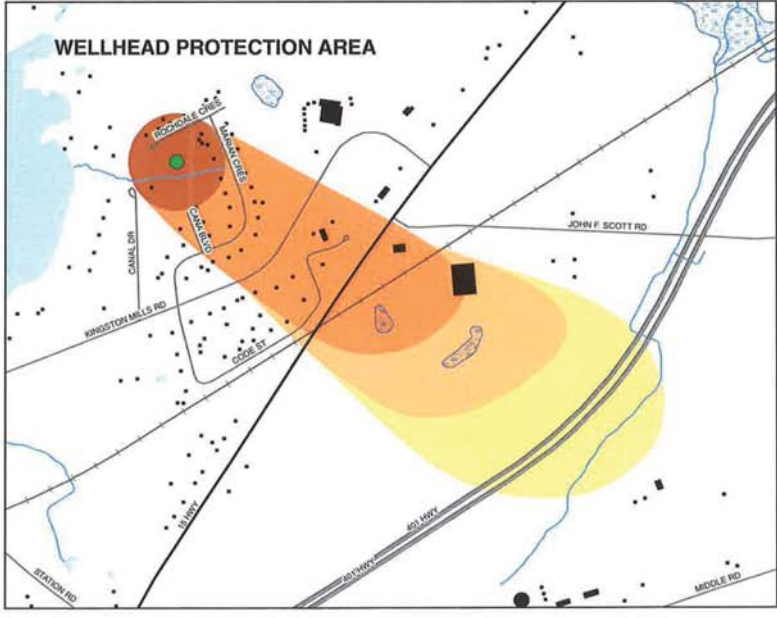
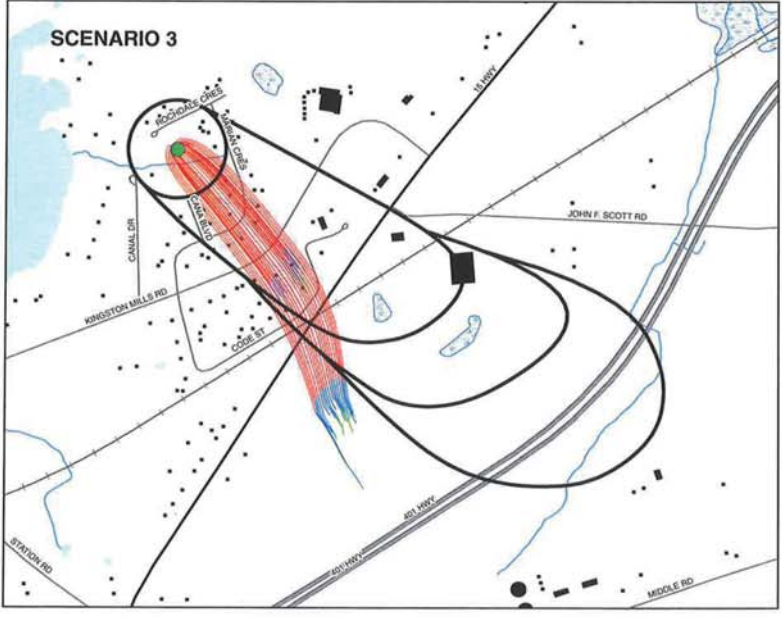
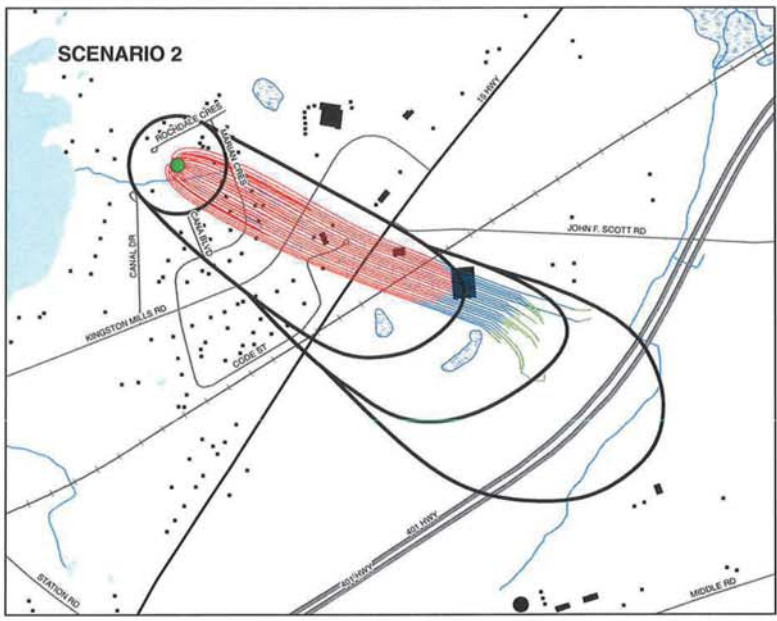
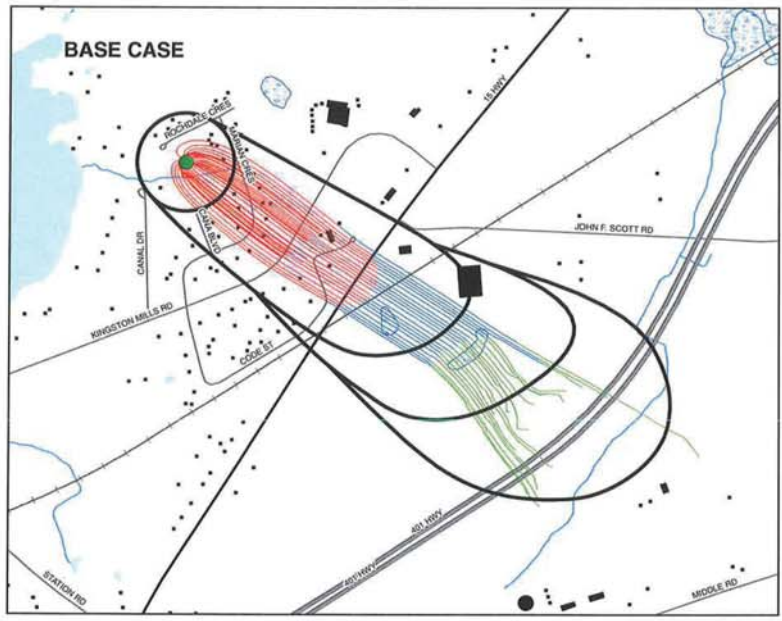


N:\Active\2008\1122_Environmental\08-1122-0350_CDDA_Cana and Miller\WP5\GIS\Env\Map\0811220350_10_ParticleTraces_WWP5.mxd



LEGEND

- Cana Subdivision Water Supply Well
- Building
- Freeway
- Expressway / Highway
- Local Road
- Railways
- Wetlands
- Watercourses
- Waterbodies
- Wellhead Protection Area

Particle Trace

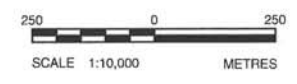
- 0 to 2 Year Time of Travel
- 2 to 5 Year Time of Travel
- 5 to 25 Year Time of Travel

Wellhead Protection Area

- Zone A - 100m Buffer from Water Supply Well
- Zone B - 2yr Time of Travel
- Zone C - 5yr Time of Travel
- Zone D - 25yr Time of Travel

NOTE:
This figure is to be read in conjunction with the accompanying Golder Associates Ltd. report No. 06-1122-0350

REFERENCE:
Produced for the Cataraqui Region Conservation Authority, under license with the Ontario Ministry of Natural Resources. © 2009 Queen's Printer for Ontario, Projection: Transverse Mercator Datum: NAD 83 Coordinate System: UTM Zone 18



PROJECT	CANA SUBDIVISION WELLHEAD PROTECTION AREA STUDY		
TITLE	PARTICLE TRACES AND WELLHEAD PROTECTION AREAS		
	PROJECT No. 06-1122-0350	SCALE AS SHOWN	REV. 0
	DESIGN I AW 22 DEC. 2008		
	GIS BT 25 MAY 2009		
	CHECK		
	REVIEW		

FIGURE: 10