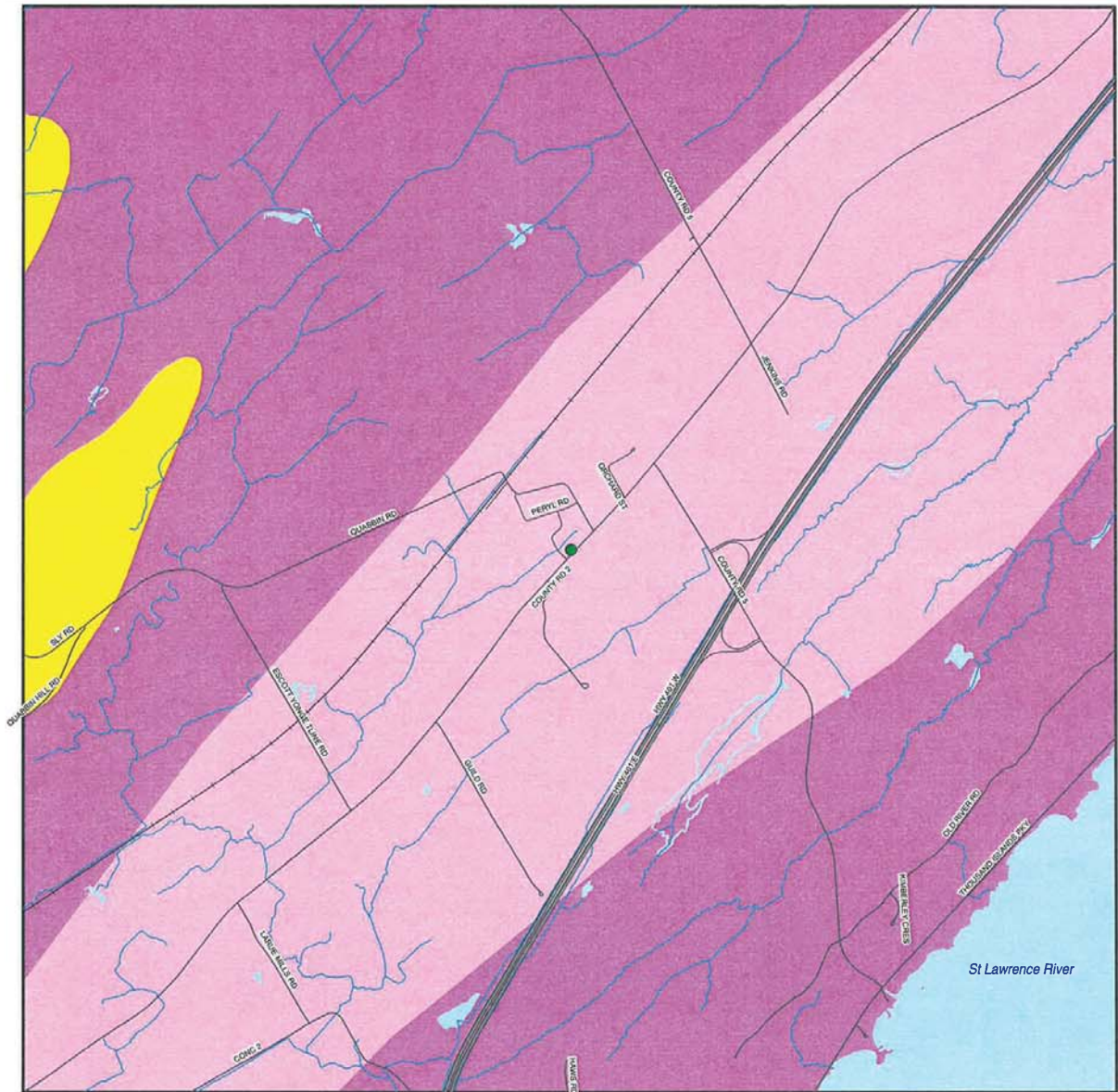


N:\Active\2008\1122 - Environmental\08-1122-0350 CERCA, Carta and Miller Well\FSG\Simx\Miller\0811220350_04_BedrockGeology.mxd



LEGEND

- Miller Manor Water Supply Well
- Freeway
- Expressway / Highway
- Collector
- Local / Street
- + Railways
- Watercourses
- Waterbodies
- Nepean
- Precambrian (Clastic metasedimentary rocks)
- Precambrian (Late felsic plutonic rocks)


NOTE:

This figure is to be read in conjunction with the accompanying Golder Associates Ltd. report No. 08-1122-0350

REFERENCE:

Produced for the Cataraqui Region Conservation Authority, under license with the Ontario Ministry of Natural Resources, © 2009 Queen's Printer for Ontario, Produced by Golder Associates Ltd. under license with the Ministry of Northern Development and Mines © 2009 Queen's Printer for Ontario
 Projection: Transverse Mercator Datum: NAD 83 Coordinate System: UTM Zone 18



PROJECT		MILLER MANOR WELL WELLHEAD PROTECTION AREA STUDY	
TITLE		BEDROCK GEOLOGY	
 Golder Associates Ottawa, Ontario	PROJECT No	08-1122-0350	SCALE AS SHOWN
	DESIGN	AW 22 DEC 2008	REV. 0
	CHEK	BT 06 APR 2009	
	REVIEW		
		FIGURE: 4	