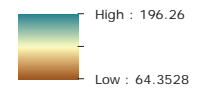


**LEGEND**

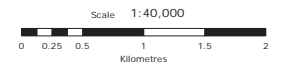
- Municipal Wells
- Roads
- Contour 5 m interval
- Contour 20m interval
- Lansdowne Subwatershed
- Model Boundary
- Waterbody

**Topography**

mASL



**Figure 3-1  
Topography**



Projection: UTM NAD83 Zone 18N  
Source: MOE, MNM - Open File Report 5801, MNR, CRCA

PROJECT No. 09-205

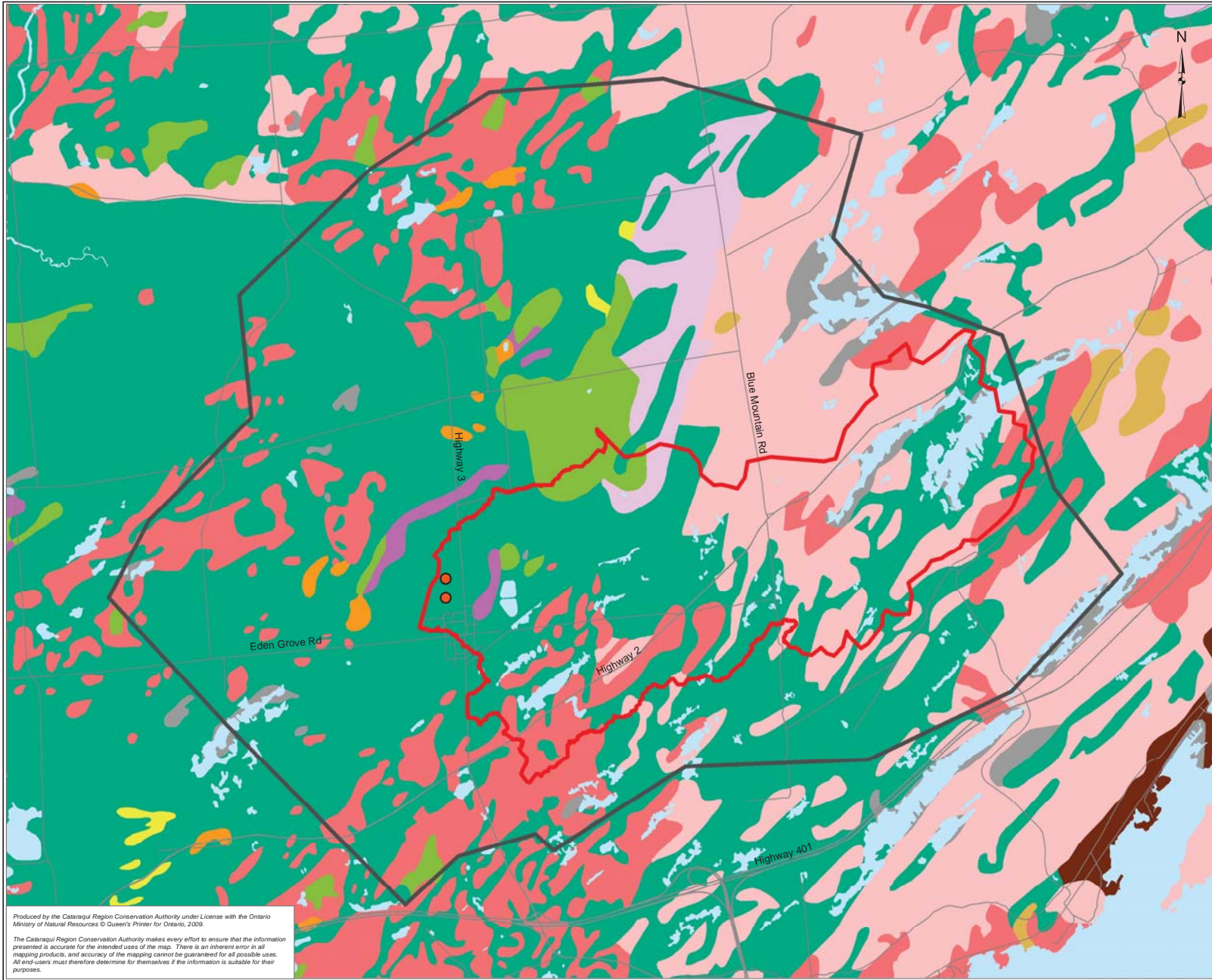
PROJECT Cataraqi Source Protection Region  
Lansdowne WHPA & Tier 2 WB Study

DESIGN: NMP  
CAD/GIS: NMP  
CHECK: ACW  
REV: 0A

DATE: 25/03/2011



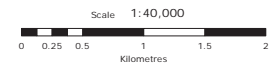
Produced by the Cataraqi Region Conservation Authority under License with the Ontario Ministry of Natural Resources © Queen's Printer for Ontario, 2009.  
The Cataraqi Region Conservation Authority makes every effort to ensure that the information presented is accurate for the intended uses of the map. There is an inherent error in all mapping products, and accuracy of the mapping cannot be guaranteed for all possible uses. All end-users must therefore determine for themselves if the information is suitable for their purposes.



**LEGEND**

- Municipal Wells
- Lansdowne Subwatershed
- Roads
- Model Boundary
- Waterbody
- Surficial Geology**
- 1: Precambrian Bedrock
- 2: Bedrock-drift complex in Precambrian terrain
  - 2a: Primarily till cover
  - 2b: Primarily stratified drift cover
- 3: Paleozoic Bedrock
- 4: Bedrock-drift complex in Paleozoic terrain
- 5: Till/Diamicton
  - 5a: Silty sand to sand-textured till on Precambrian terrain
  - 5b: Stone-poor, sandy silt to silty sand-textured till on Paleozoic terrain
- 6: Ice-contact stratified deposits
- 7: Glaciofluvial deposits
- 8: Fine-textured glaciolacustrine deposits
  - 8a: Massive to well laminated
- 9: Coarse-textured glaciolacustrine deposits
  - 9b: Littoral deposits
  - 9c: Foreshore and basinal deposits
- 20: Organic deposits
- 19: Modern alluvial deposits

**Figure 3-2  
Surficial Geology**



Projection: UTM NAD83 Zone 18N  
 Source: MOE, MNMND- Open File Report 5801, MNR, CRCA

PROJECT No. 09-205

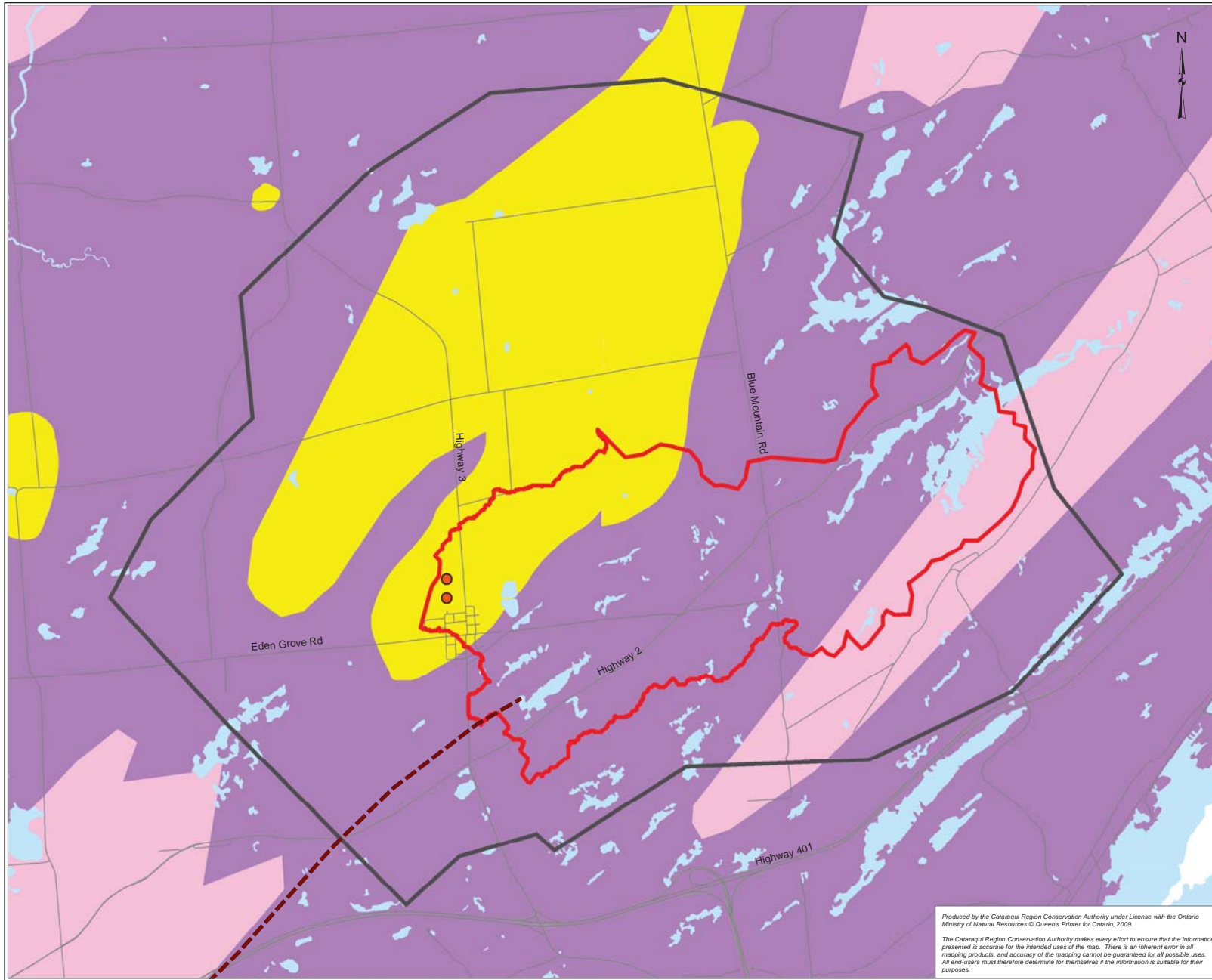
PROJECT Cataraqui Source Protection Region  
 Lansdowne WHPA & Tier 2 WB Study

DESIGN: NMP  
 CAD/GIS: NMP  
 CHECK: ACW  
 REV: 0A

DATE: 29/03/2011



Produced by the Cataraqui Region Conservation Authority under License with the Ontario Ministry of Natural Resources © Queen's Printer for Ontario, 2009.  
 The Cataraqui Region Conservation Authority makes every effort to ensure that the information presented is accurate for the intended uses of the map. There is an inherent error in all mapping products, and accuracy of the mapping cannot be guaranteed for all possible uses. All end-users must therefore determine for themselves if the information is suitable for their purposes.



**LEGEND**

- Municipal Wells
- Fault
- Lansdowne Subwatershed
- Roads
- Model Boundary
- Waterbody

**Bedrock**

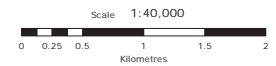
**Paleozoic Formation**

- Nepean/Potsdam

**Precambrian**

- Precambrian (Late felsic plutonic rocks)
- Precambrian (Clasic metasedimentary rocks)

**Figure 3-3  
Bedrock Geology**



Projection: UTM NAD83 Zone 18N  
Source: MOE, MNM - Open File Report 5801, MNR, CRCA

PROJECT No. 09-205

PROJECT Cataraqi Source Protection Region  
Lansdowne WHPA & Tier 2 WB Study

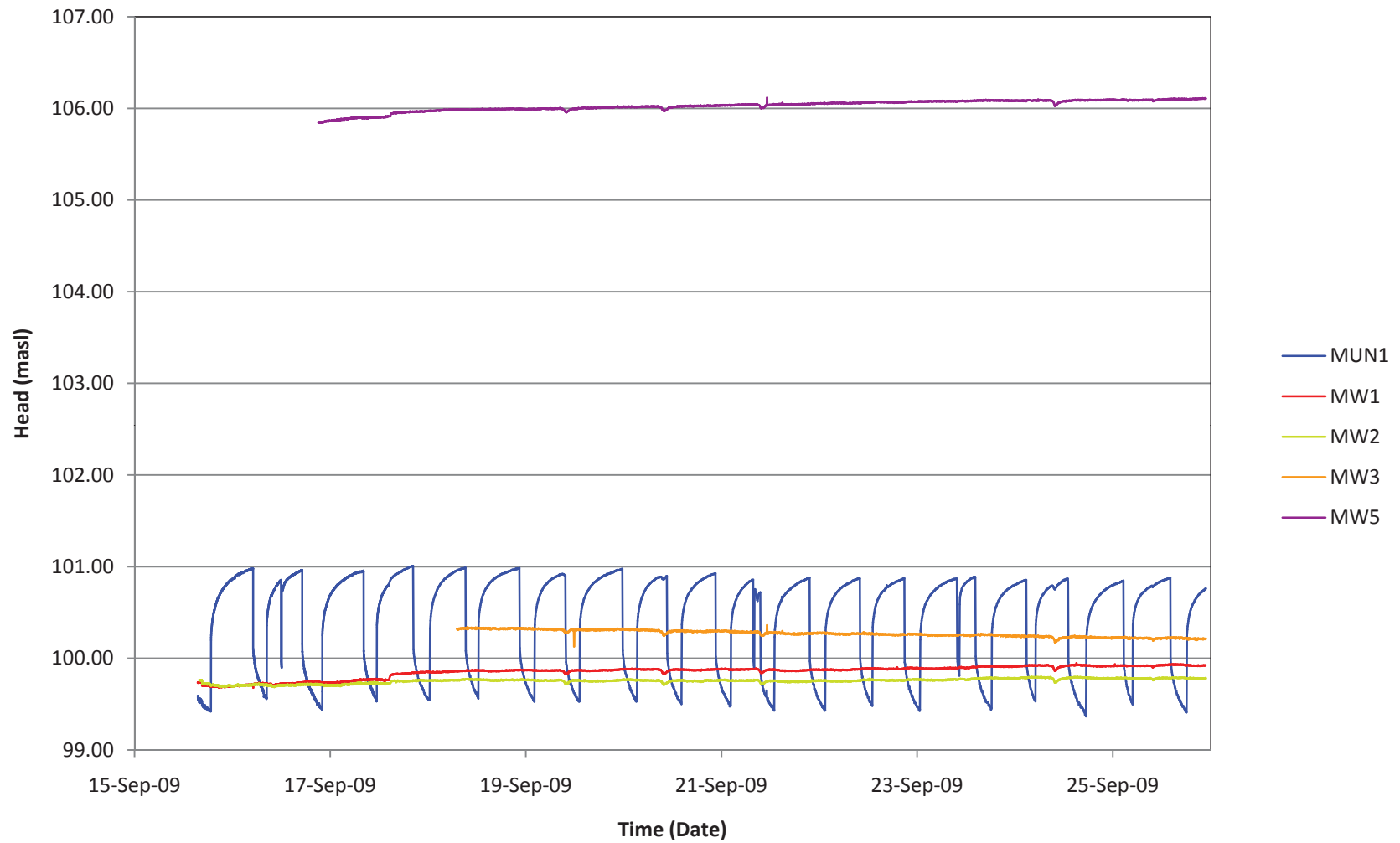
DESIGN: NMP  
CAD/GIS: NMP  
CHECK: ACW  
REV: 0A

DATE: 29/03/2011



Produced by the Cataraqi Region Conservation Authority under License with the Ontario Ministry of Natural Resources © Queen's Printer for Ontario, 2009.

The Cataraqi Region Conservation Authority makes every effort to ensure that the information presented is accurate for the intended uses of the map. There is an inherent error in all mapping products, and accuracy of the mapping cannot be guaranteed for all possible uses. All end-users must therefore determine for themselves if the information is suitable for their purposes.



**Continuous Hydraulic Head Measurements at Select Wells Using Dataloggers**

**Cataraqui Source Protection Region Lansdowne WHPA & Tier 2 WB Study**

Prepared by: NMP

Reviewed by: ACW

Date: Mar 29, 2011

**Figure 4-1**

Doc. No: 09-205\_CRCA-Lansdowne WHPA & Tier 2  
WB\Reports\Revised Figures\Figure 4-1 .xlsx

