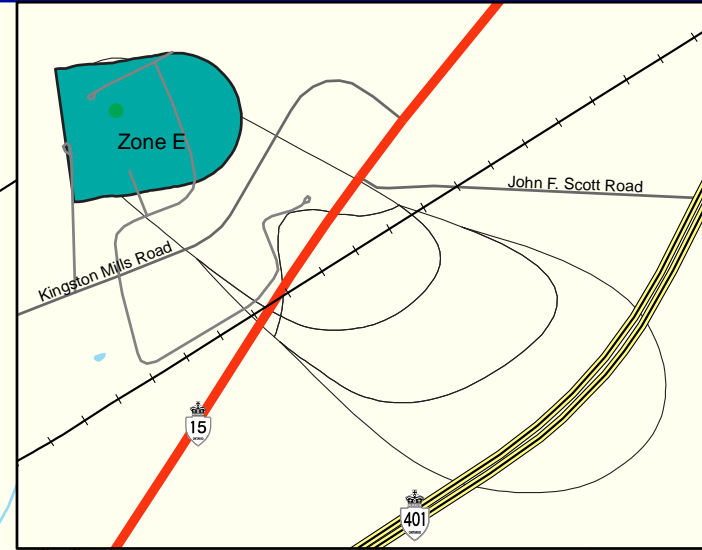
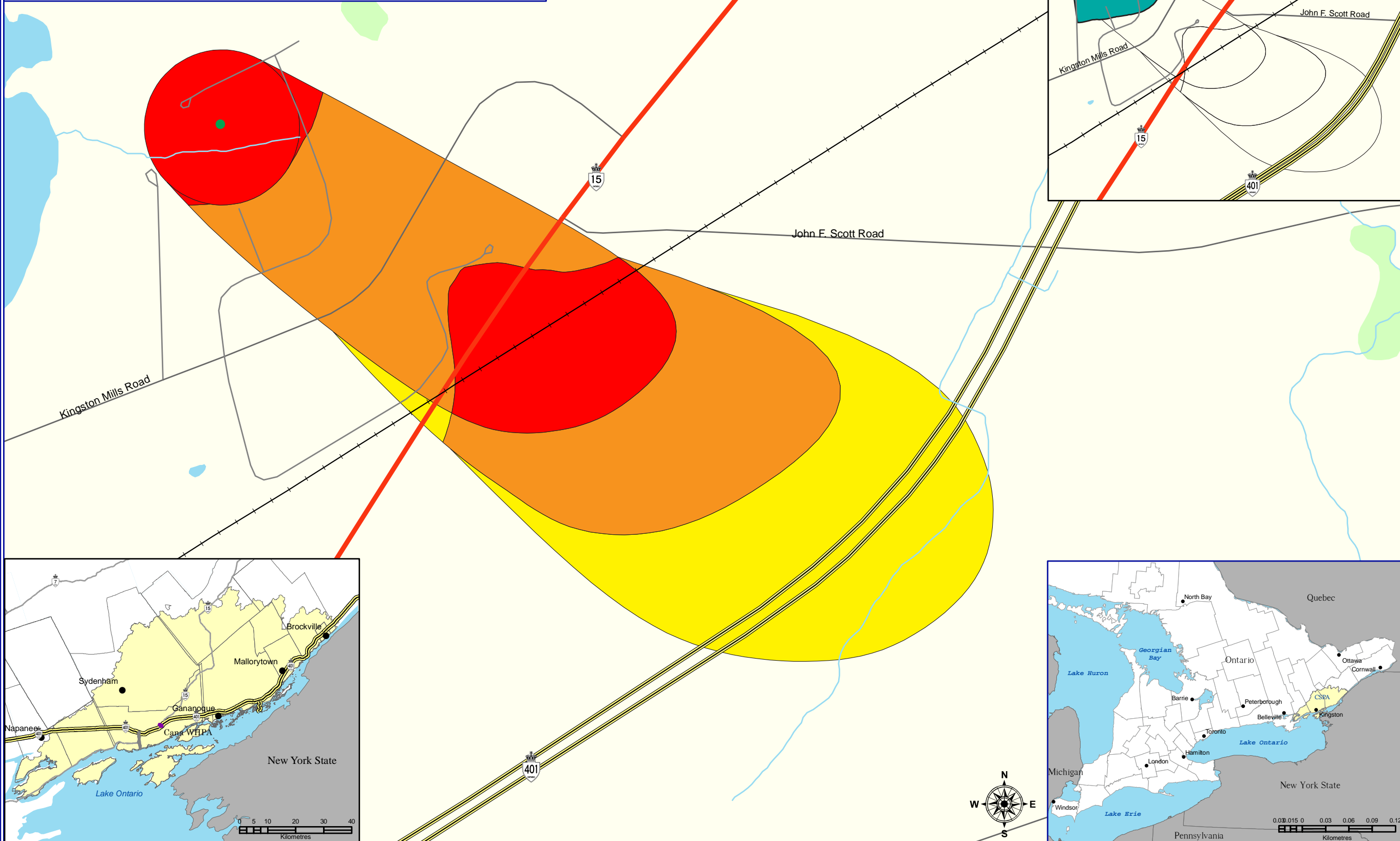


Cataraqui Source Protection Area

Cana Wellhead Protection Area - Vulnerability Scoring

Map 5-14



- Legend**
- Water Supply Well
 - Cataraqui Source Protection Area
 - Railway
 - Freeway
 - Expressway / Highway
 - Collector
 - Watercourses
 - Waterbodies
 - Wetlands

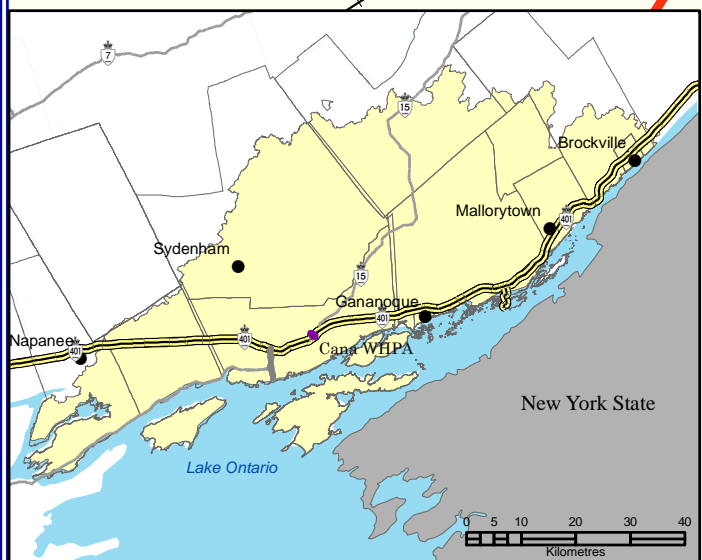
Wellhead Protection Area Vulnerability Scoring

- 2
- 4
- 6
- 8
- 10

Potential Gudi - Vulnerability Scoring

- Zone E

Note: An assessment of groundwater vulnerability was completed for the Cana Wellhead Protection Area (WHPA) using local data; this information refines the Cataraqui-wide assessment that is shown on Map 5-13. The local findings are shown on Map 5-13. The vulnerability scores on this map were assigned to each component wellhead protection area (WHPA-A through WHPA-E) in accordance with the Technical Rules: Assessment Report, (Ontario Ministry of the Environment, November 2009).



Created: July 20, 2009
 Printed: June 30, 2010

Scale 1:5,000

Universal Transverse Mercator Projection
 North American Datum 83

Golder Associates June 2009

CATARAQUI Source Protection Area

Ontario

This map was funded by the Ontario Government, and the Ministry of Environment. Produced by the Cataraqui Region Conservation Authority under license with the Ontario Ministry of Natural Resources © Queen's Printer for Ontario, 2005.

Aerial Photography © Group Alta, 2008.

The CRCA makes every effort to insure that the information presented is accurate for the intended uses of the map. There is an inherent error in all mapping products, and accuracy of the mapping cannot be guaranteed for all possible uses. All end-users must therefore determine for themselves if the information is suitable for their purposes.

Y:\Base Data\Source Water\Maps\Assessment Report\Chapter 6\Map 5-14 Cana WHPA Vulnerability Scores