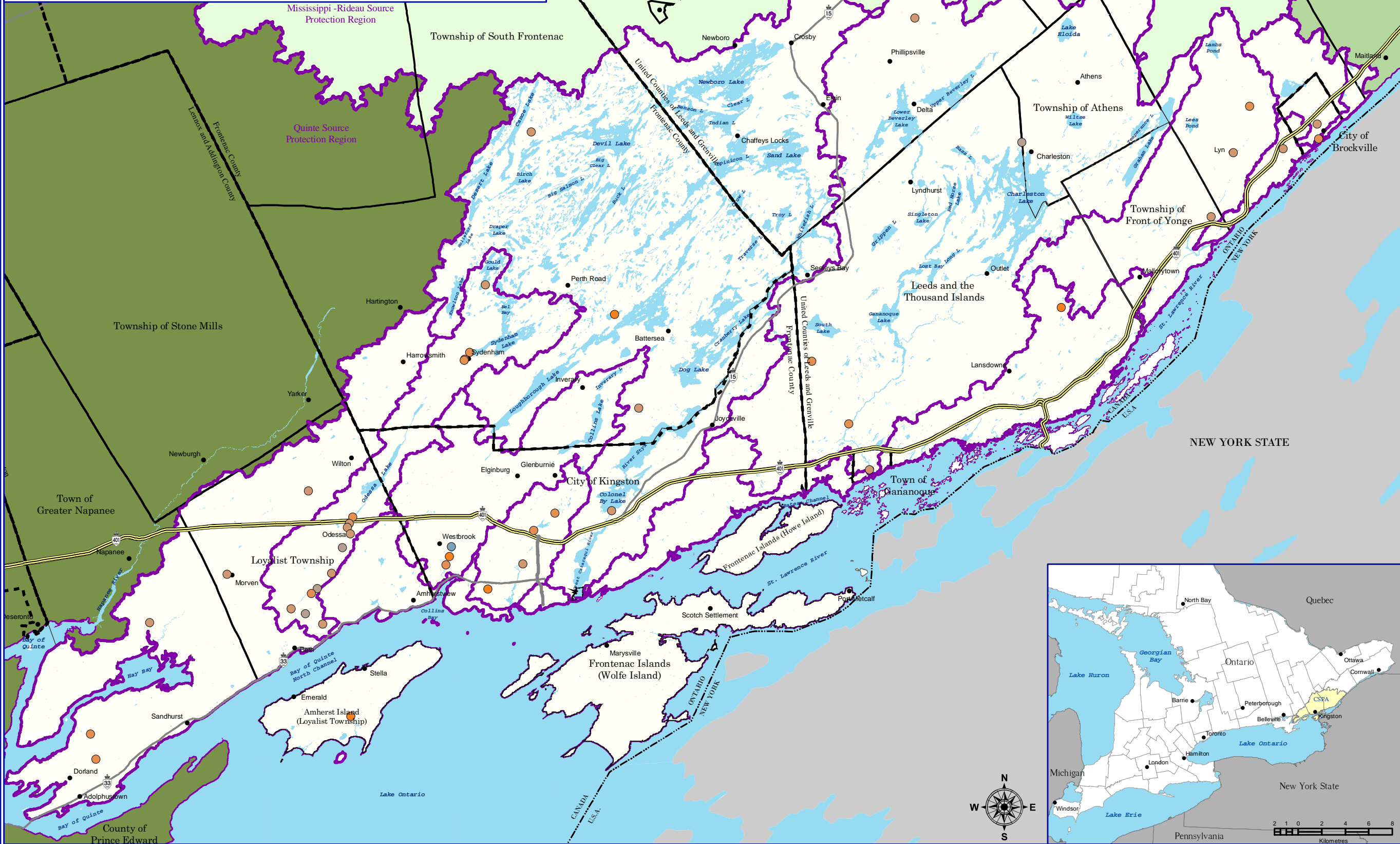


Cataraqui Source Protection Area

Benthic Macroinvertebrates, Sampling from 2003 - 2009

Map 2-15



Legend

- International Boundary
- Upper Tier Municipalities
- Lower Tier Municipalities
- Communities
- Watersheds Boundary
- Waterbodies

Hilsenhoff Benthic Scoring

- 3.76 - 4.25 (Very Good)
- 4.26 - 5.00 (Good)
- 5.01 - 5.75 (Fair)
- 5.76 - 6.50 (Fairly Poor)
- 6.51 - 7.25 (Poor)
- 7.26 - 10.00 (Very Poor)

Created: August 20, 2009
 Printed: February 23, 2011

Scale 1:330,000

Universal Transverse Mercator Projection
 North American Datum 83



This map was funded by the Ontario Government, and the Ministry of Environment. Produced by the Cataraqui Region Conservation Authority under license with the Ontario Ministry of Natural Resources © Queen's Printer for Ontario, 2005. Aerial Photography © Group Alta, 2008.

The CRCA makes every effort to insure that the information presented is accurate for the intended uses of the map. There is an inherent error in all mapping products, and accuracy of the mapping cannot be guaranteed for all possible uses. All end-users must therefore determine for themselves if the information is suitable for their purposes.

Y:\Base Data\Source Water\Maps\Assessment Report\Chapter 2\Map 2-15 Benthic Macroinvertebrates_Sampling from 2003 - 2009

