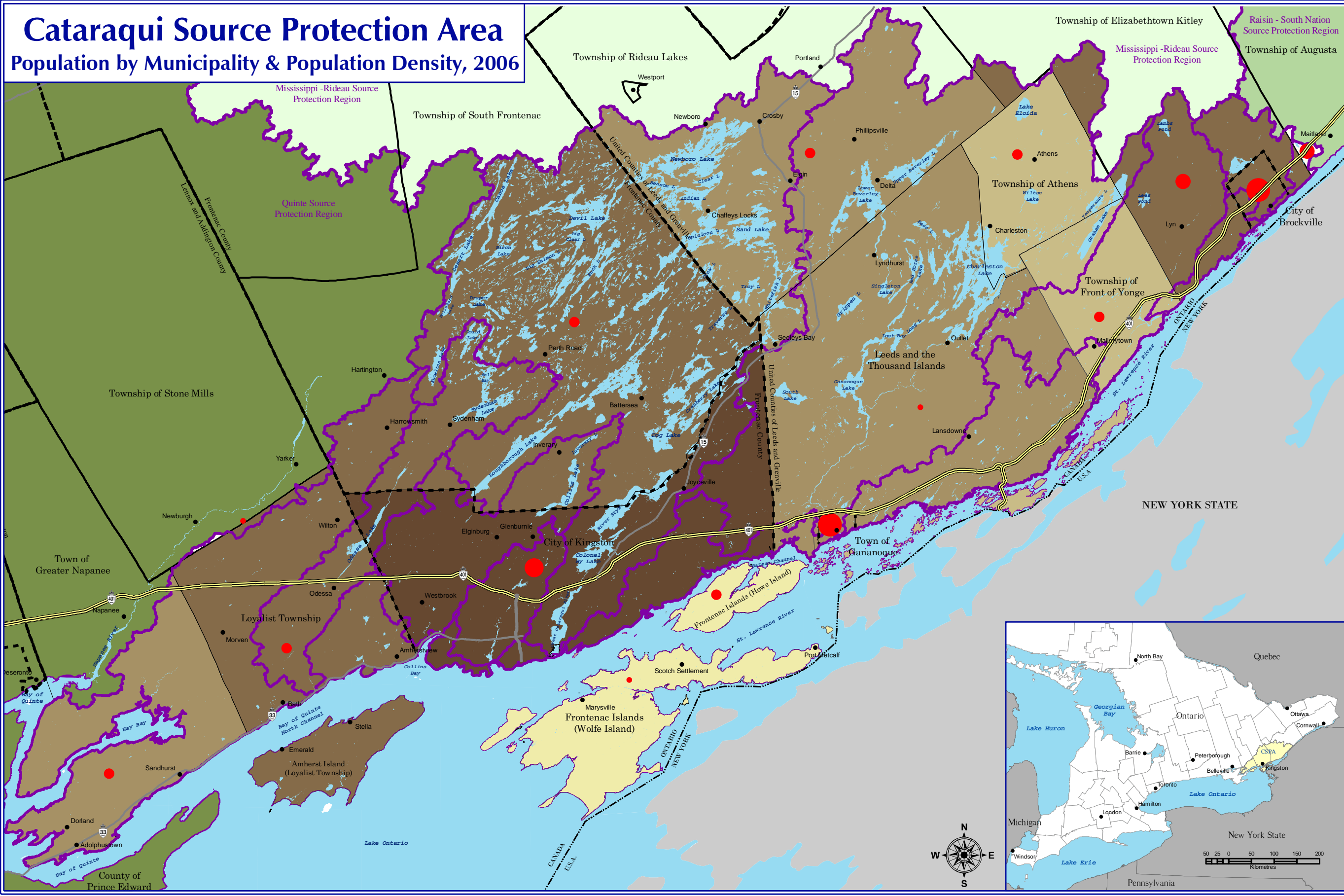


Cataraqui Source Protection Area

Population by Municipality & Population Density, 2006

Map 2-16



Legend

- International Boundary
- Upper Tier Municipalities
- Lower Tier Municipalities
- Communities
- Watersheds Boundary
- Waterbodies

2006 Population by Municipality

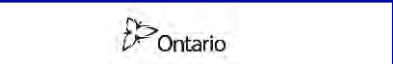
- 0.0 - 2,799.9
- 2,800.0 - 5,199.9
- 5,200 - 11,999.9
- 12,000 - 21,999.9
- 22,000 and greater

Population Density (km²), 2006

- 0.0 - 19.9
- 20 - 59.9
- 60 - 139.9
- 140 - 269.9
- 270 and greater

Created: August 20, 2009
 Printed: February 23, 2011

Scale 1:330,000
 0 1.5 3 6 9 12
 Kilometres
 Universal Transverse Mercator Projection
 North American Datum 83



This map was funded by the Ontario Government, and the Ministry of Environment.
 Produced by the Cataraqui Region Conservation Authority under license with the Ontario Ministry of Natural Resources © Queen's Printer for Ontario, 2005.
 Aerial Photography © Group Alta, 2008.
 The CRCA makes every effort to insure that the information presented is accurate for the intended uses of the map. There is an inherent error in all mapping products, and accuracy of the mapping cannot be guaranteed for all possible uses. All end-users must therefore determine for themselves if the information is suitable for their purposes.
 Y:\Base Data\Source Water\Maps\Assessment Report\Chapter 2\Map 2-16 Population by Municipality & Population Density, 2006

