

Cataraqui Source Protection Area

Significant Groundwater Recharge Areas
Locations where conditions can be moderate, or low

Map 5-11

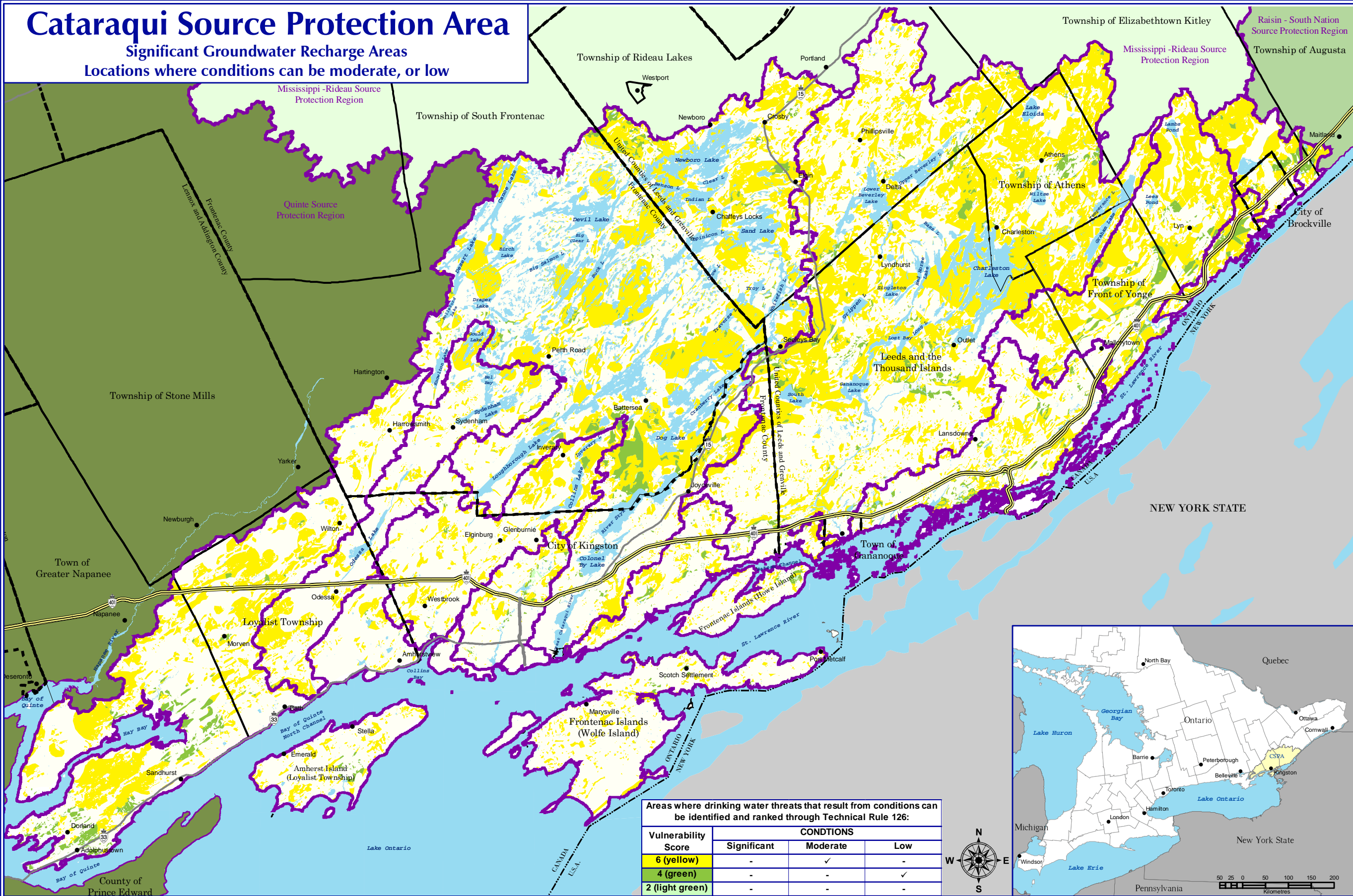


Legend

- International Boundary
- Upper Tier Municipalities
- Lower Tier Municipalities
- Communities
- Watersheds Boundary
- Waterbodies

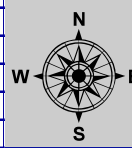
Significant Groundwater Recharge Areas - Vulnerability Scoring

- 6 (yellow)
- 4 (green)
- 2 (light green)



Areas where drinking water threats that result from conditions can be identified and ranked through Technical Rule 126:

Vulnerability Score	CONDITIONS		
	Significant	Moderate	Low
6 (yellow)	-	✓	-
4 (green)	-	-	✓
2 (light green)	-	-	-



Created: August 20, 2009
Printed: February 23, 2011

Scale 1:330,000
0 1.5 3 6 9 12
Kilometres
Universal Transverse Mercator Projection
North American Datum 83

August 2008

CATARAQUI
Source Protection Area

Ontario

This map was funded by the Ontario Government, and the Ministry of Environment. Produced by the Cataraqui Region Conservation Authority under license with the Ontario Ministry of Natural Resources © Queen's Printer for Ontario, 2005. Aerial Photography © Group Alta, 2008.

The CRCA makes every effort to insure that the information presented is accurate for the intended uses of the map. There is an inherent error in all mapping products, and accuracy of the mapping cannot be guaranteed for all possible uses. All end-users must therefore determine for themselves if the information is suitable for their purposes.

Y:\Base Data\Source Water\Maps\Assessment Report\Chapter 5\Map 5-11 SGRA Locations where conditions can be S.M. or L.