

# Cataraqui Source Protection Area

Cana WHPA - Locations where DNAPL threats can be significant, moderate, or low

## Map 5-17



### Legend

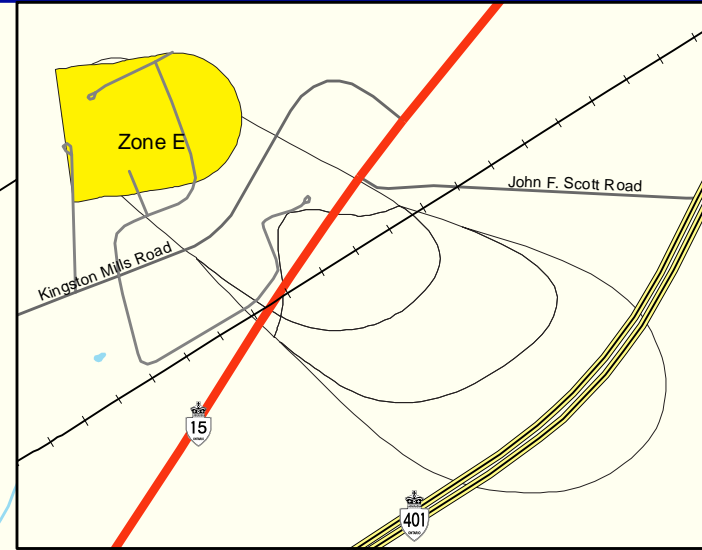
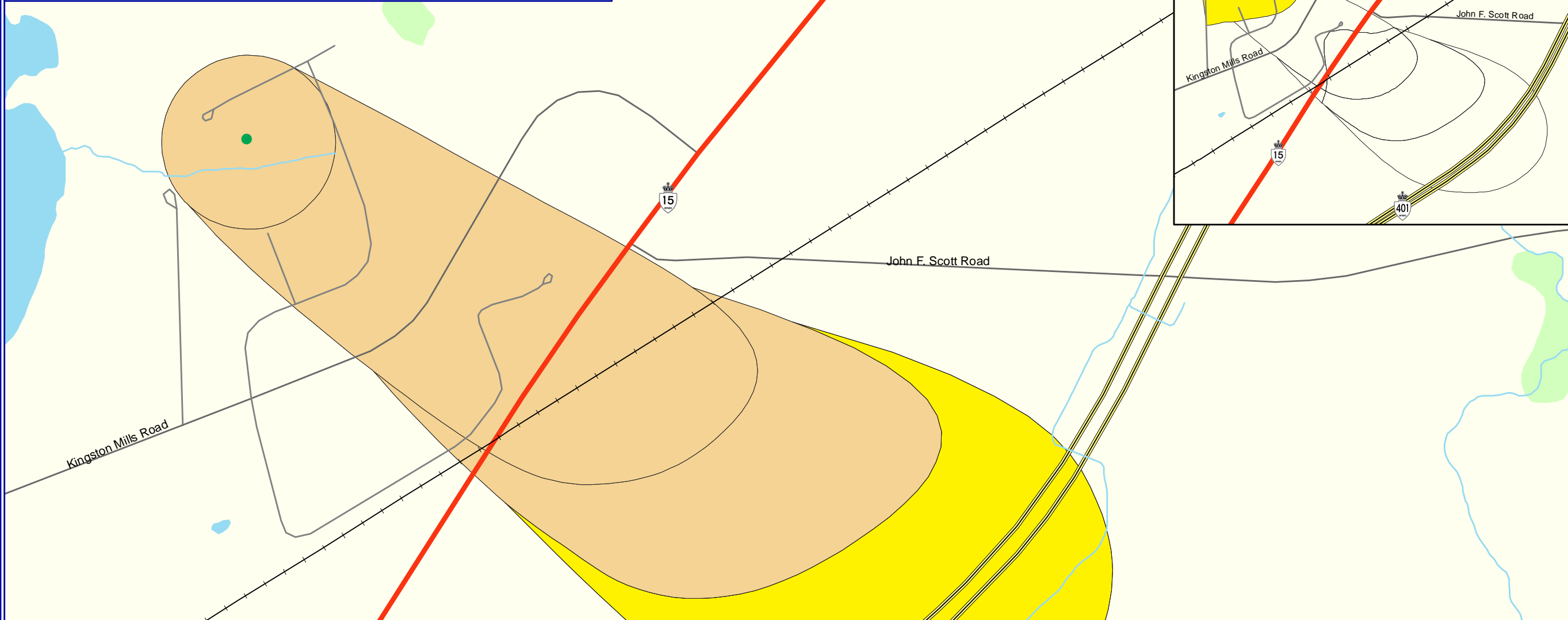
- Water Supply Well
- Cataraqui Source Protection Area
- Railway
- Freeway
- Expressway / Highway
- Collector
- Watercourses
- Waterbodies
- Wetlands

### Wellhead Protection Area Vulnerability Scoring

- 2
- 4
- 6
- 8
- 10

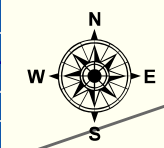
### Wellhead Protection Area

- Zone A - C, E



Refer to Appendix G (Provincial Tables of Circumstances) for a listing of activities and related circumstances that would be DNAPL drinking water threats in these areas. Table 4-1 provides a summary of this information for significant threats in WHPAs.

WHPA	Provincial Table Number (Table Name)		
	Significant	Moderate	Low
WHPA-A, B, C, C1	9 (DWAS)	-	-
WHPA-D	-	10 (DWHV ASGRA6M)	11 (DWHV ASGRA6L)



Created: July 20, 2009  
Printed: February 23, 2011

Scale 1:5,000  
0 20 40 80 120 160  
Metres  
Universal Transverse Mercator Projection  
North American Datum 83

Golder Associates June 2009

CATARAQUI Source Protection Area

Ontario

This map was funded by the Ontario Government, and the Ministry of Environment, Produced by the Cataraqui Region Conservation Authority under license with the Ontario Ministry of Natural Resources © Queen's Printer for Ontario, 2005.

Aerial Photography © Group Alta, 2008.

The CRCA makes every effort to insure that the information presented is accurate for the intended uses of the map. There is an inherent error in all mapping products, and accuracy of the mapping cannot be guaranteed for all possible uses. All end-users must therefore determine for themselves if the information is suitable for their purposes.

Y:\Base Data\Source Water\Maps\Assessment Report\Chapter 6\Map 5-17 Cana WHPA - Locations where DNAPL threats can be S.M, or L