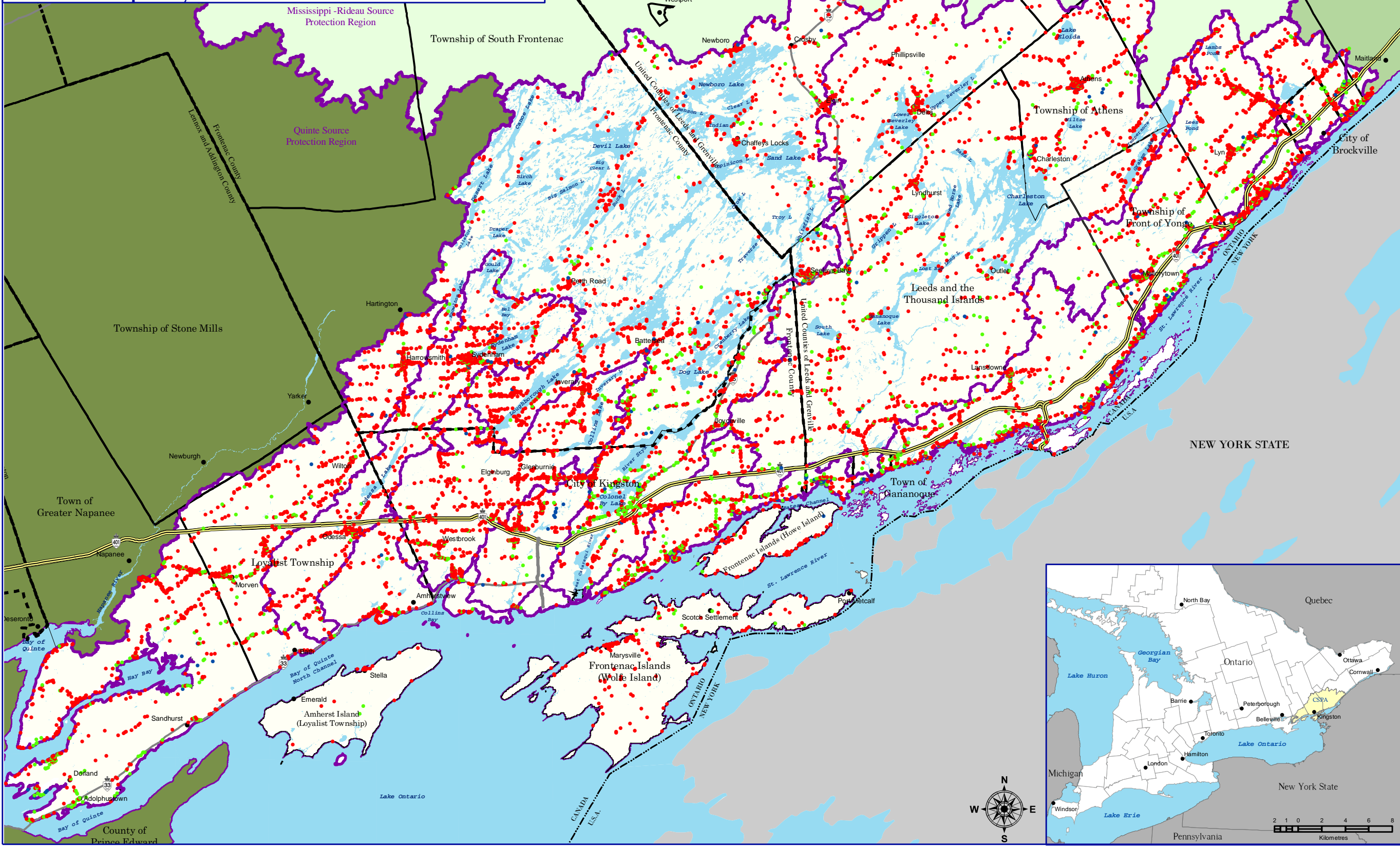


Cataraqui Source Protection Area

Aquifer Vulnerability Assessment

Intrinsic Susceptibility Index Protocol (2002 Amendment) at Wells

Map 5-1a



Legend

- International Boundary
- Upper Tier Municipalities
- Lower Tier Municipalities
- Communities
- Watersheds Boundary
- Waterbodies

Highly Vulnerable Aquifers
Intrinsic Susceptibility Index, Method #1

- 1 - High Vulnerability
- 2 - Moderate Vulnerability
- 3 - Low Vulnerability



Created: August 20, 2009
Printed: February 23, 2011

Scale 1:330,000

0 1.5 3 6 9 12
Kilometres

Universal Transverse Mercator Projection
North American Datum 83

August 2008

CATARAQUI
Source Protection Area

This map was funded by the Ontario Government, and the Ministry of Environment
Produced by the Cataraqui Region Conservation Authority under license
with the Ontario Ministry of Natural Resources © Queen's Printer for Ontario, 2005.

Aerial Photography © Group Alta, 2008.

The CRCA makes every effort to insure that the information presented is accurate
for the intended uses of the map. There is an inherent error in
all mapping products, and accuracy of the mapping cannot be guaranteed for all
possible uses. All end-users must therefore determine for themselves if the
information is suitable for their purposes.

Y:\Base Data\Source Water Maps\Assessment Report\Chapter 5\Map 5-1a Aquifer
Vulnerability Assessment ISL Protocol (2002 Amendment) at Wells