

# Cataraqui Source Protection Area

## Highly Vulnerable Aquifers

# Map 5-1e

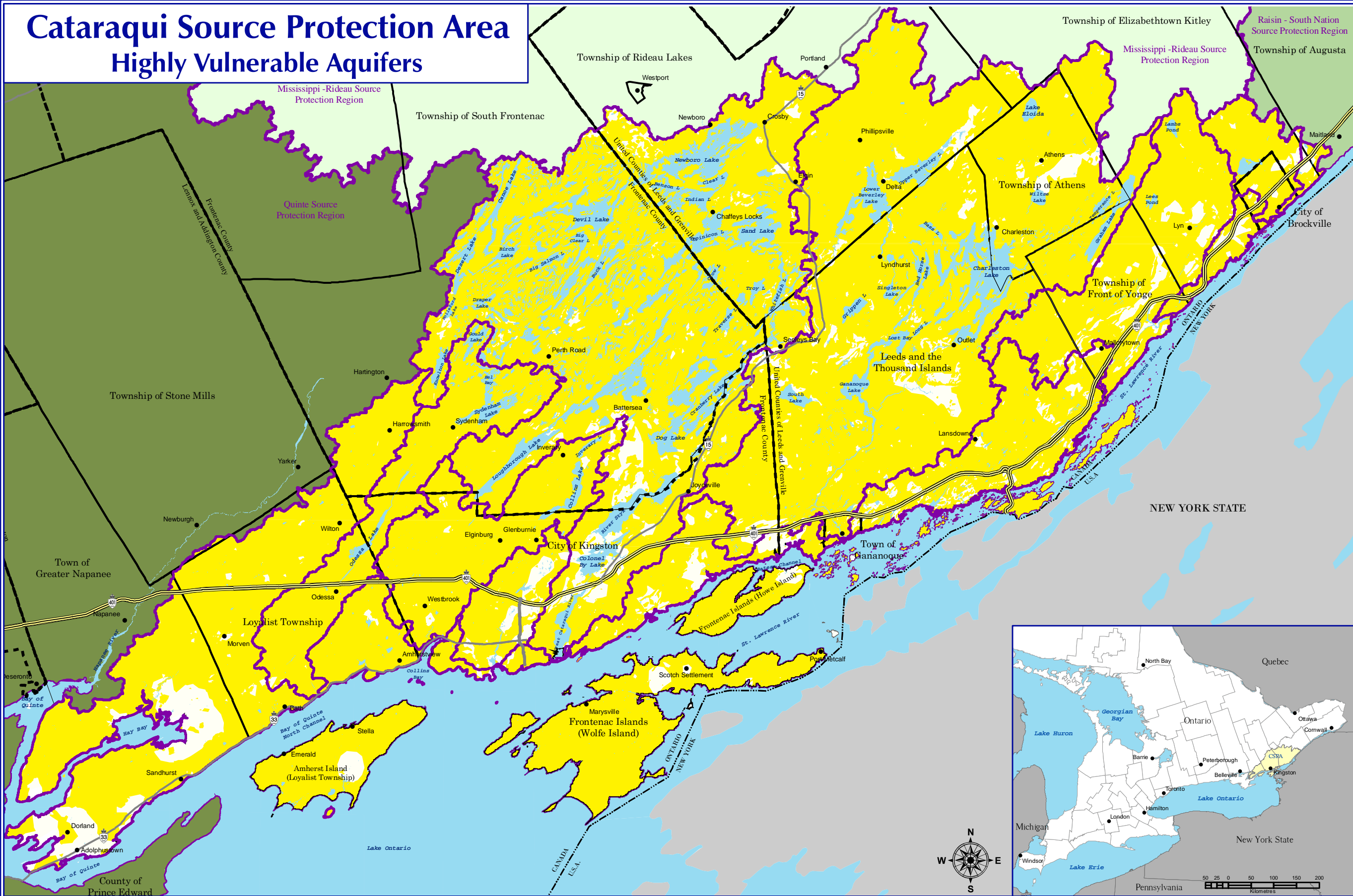


### Legend

- International Boundary
- Upper Tier Municipalities
- Lower Tier Municipalities
- Communities
- Watersheds Boundary
- Waterbodies

### Highly Vulnerable Aquifer - Vulnerability Scoring

6



Notes:  
 (1) The assessment of groundwater vulnerability that supports this map was undertaken on a Cataraqui-wide basis. Site-specific investigation is recommended to confirm the vulnerability of any given location.  
 (2) Local assessments of groundwater vulnerability were completed for each of the wellhead protection areas (WHPAs) in the Cataraqui area. The WHPAs are located around the Cana Well Supply (in Kingston), the Lansdowne Well Supply, and the Miller Manor Apartments Well Supply (in Mallorytown); in addition, part of the WHPA for the Westport Well Supply falls within the Cataraqui area. The local assessments for these WHPAs refine the Cataraqui-wide assessment that is shown on this map.

Created: August 20, 2009  
 Printed: February 23, 2011

Scale 1:330,000  
 0 1.5 3 6 9 12  
 Kilometres  
 Universal Transverse Mercator Projection  
 North American Datum 83

August 2008

**CATARAQUI**  
 Source Protection Area

This map was funded by the Ontario Government, and the Ministry of Environment, Produced by the Cataraqui Region Conservation Authority under license with the Ontario Ministry of Natural Resources © Queen's Printer for Ontario, 2005.

Aerial Photography © Group Alta, 2008.  
 The CRCA makes every effort to insure that the information presented is accurate for the intended uses of the map. There is an inherent error in all mapping products, and accuracy of the mapping cannot be guaranteed for all possible uses. All end-users must therefore determine for themselves if the information is suitable for their purposes.  
 Y:\Base Data\Source Water\Maps\Assessment Report\Chapter 5\Map 5-1e Highly Vulnerable Aquifer

