

Cataraqui Source Protection Area

Highly Vulnerable Aquifers

Locations where DNAPL threats can be moderate, or low

Map 5-4



Legend

- International Boundary
- Upper Tier Municipalities
- Lower Tier Municipalities
- Communities
- Watersheds Boundary
- Waterbodies

Highly Vulnerable Aquifers - Vulnerability Scoring

6

*Note: The delineation of highly vulnerable aquifers has a high uncertainty and site-specific investigation is required to confirm the vulnerability of any given location.

Created: August 20, 2009
Printed: February 23, 2011

Scale 1:330,000
0 1.5 3 6 9 12
Kilometres
Universal Transverse Mercator Projection
North American Datum 83

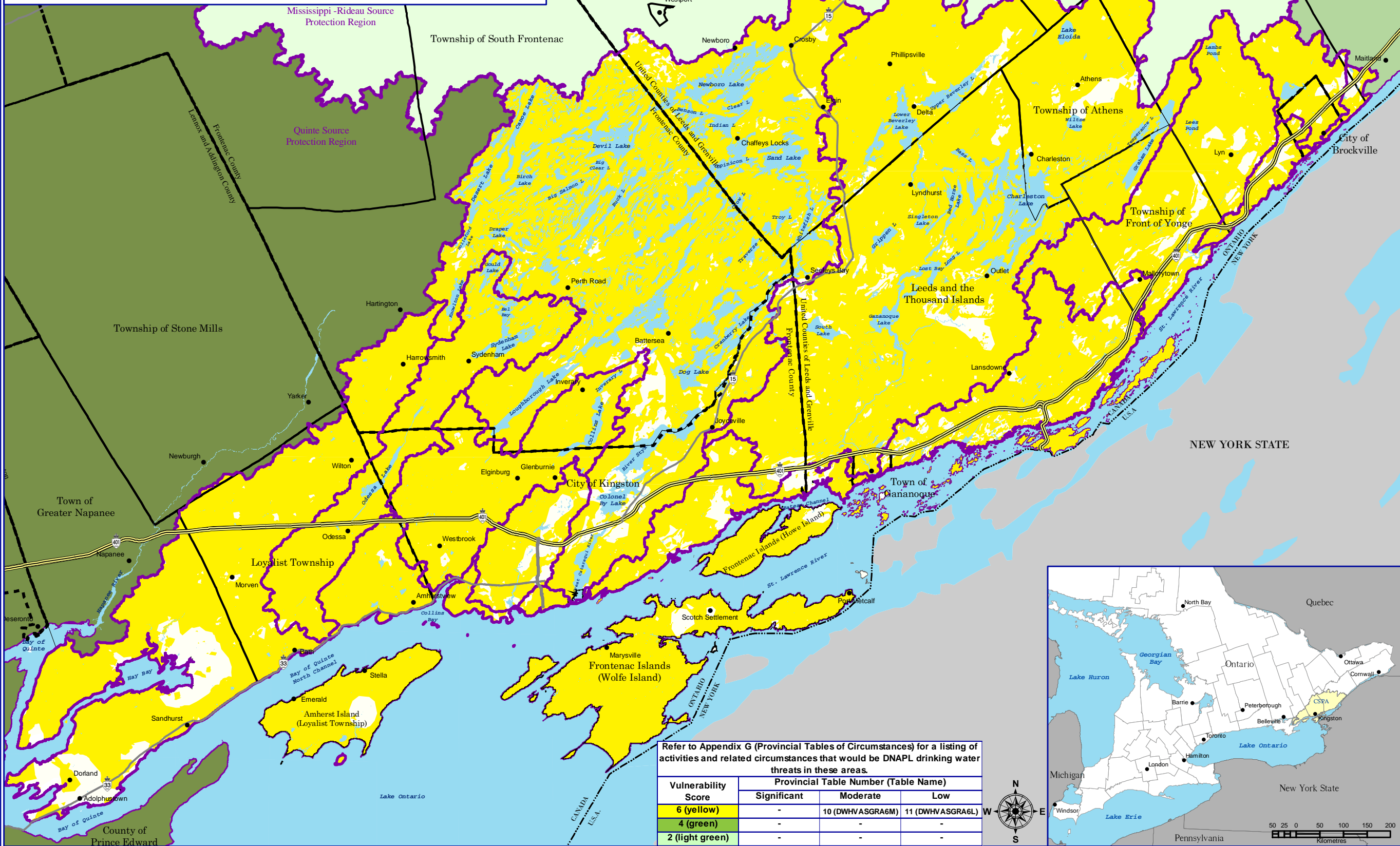
August 2008
DILLON CONSULTING

CATARAQUI Source Protection Area
Ontario

This map was funded by the Ontario Government, and the Ministry of Environment, Produced by the Cataraqui Region Conservation Authority under license with the Ontario Ministry of Natural Resources © Queen's Printer for Ontario, 2005.

Aerial Photography © Group Alta, 2008.

The CRCA makes every effort to insure that the information presented is accurate for the intended uses of the map. There is an inherent error in all mapping products, and accuracy of the mapping cannot be guaranteed for all possible uses. All end-users must therefore determine for themselves if the information is suitable for their purposes.
Y:\Base Data\Source Water\Maps\Assessment Report\Chapter 5\Map 5-4\WA - Locations where DNAPL threats can be S.M. or L.



Refer to Appendix G (Provincial Tables of Circumstances) for a listing of activities and related circumstances that would be DNAPL drinking water threats in these areas.

Vulnerability Score	Provincial Table Number (Table Name)		
	Significant	Moderate	Low
6 (yellow)	-	10 (DWHV ASGRA6M)	11 (DWHV ASGRA6L)
4 (green)	-	-	-
2 (light green)	-	-	-



50 25 0 50 100 150 200
Kilometres