

# Cataraqui Source Protection Area

## Highly Vulnerable Aquifers

Locations where conditions can be moderate, or low

# Map 5-5



### Legend

- International Boundary
- Upper Tier Municipalities
- Lower Tier Municipalities
- Communities
- Watersheds Boundary
- Waterbodies

### Highly Vulnerable Aquifers - Vulnerability Scoring

6

\*Note: The delineation of highly vulnerable aquifers has a high uncertainty and site-specific investigation is required to confirm the vulnerability of any given location.

Created: August 20, 2009  
Printed: February 23, 2011

Scale 1:330,000  
0 1.5 3 6 9 12  
Kilometres  
Universal Transverse Mercator Projection  
North American Datum 83

August 2008  
DILLON CONSULTING

CATARAQUI Source Protection Area  
Ontario Conservation Authority

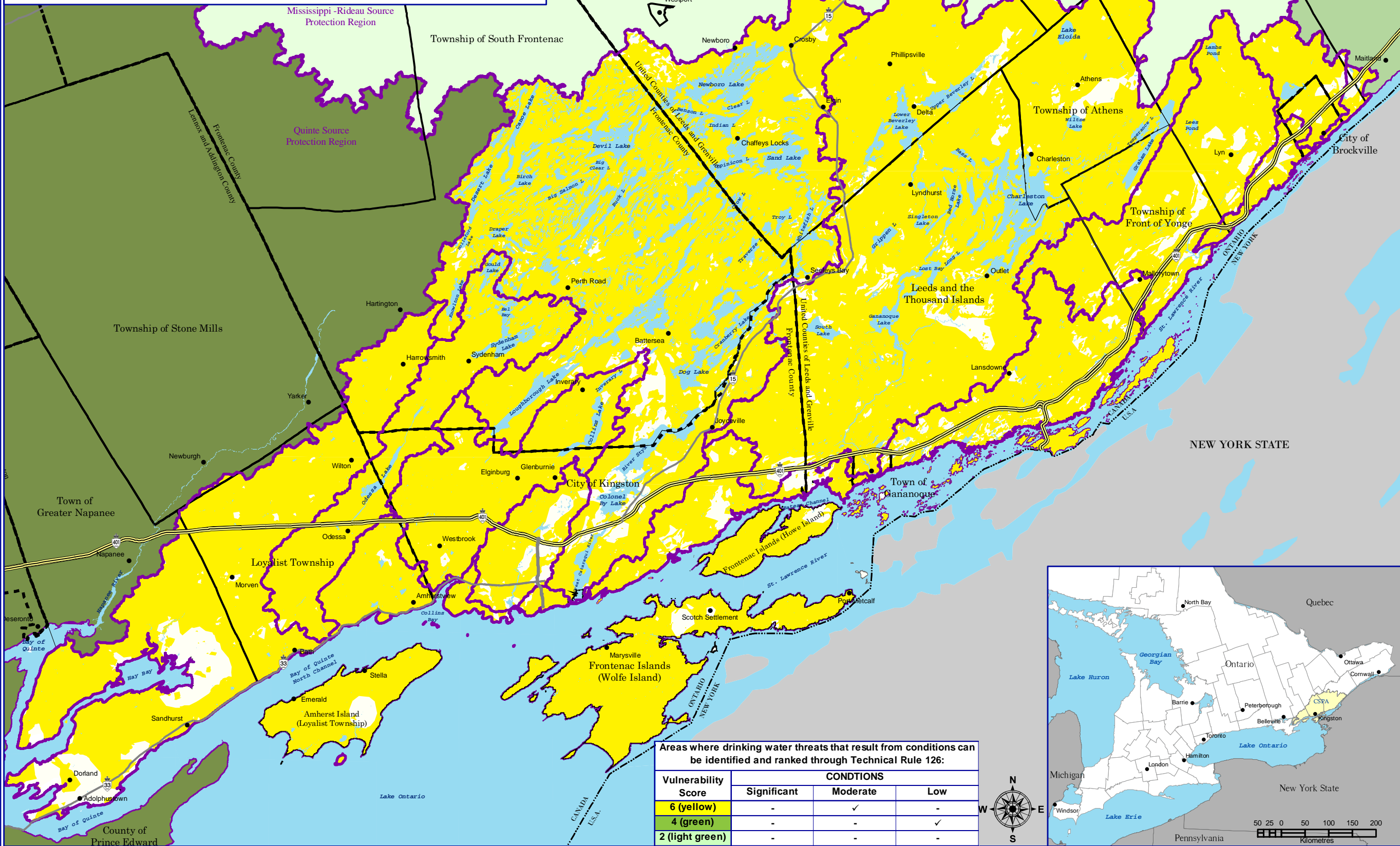
Ontario

This map was funded by the Ontario Government, and the Ministry of Environment, Produced by the Cataraqui Region Conservation Authority under license with the Ontario Ministry of Natural Resources © Queen's Printer for Ontario, 2005.

Aerial Photography © Group Alta, 2008.

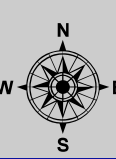
The CRCA makes every effort to insure that the information presented is accurate for the intended uses of the map. There is an inherent error in all mapping products, and accuracy of the mapping cannot be guaranteed for all possible uses. All end-users must therefore determine for themselves if the information is suitable for their purposes.

Y:\Base Data\Source Water\Maps\Assessment Report\Chapter 5\Map 5-5\WA - Locations where conditions can be S.M. or L.



Areas where drinking water threats that result from conditions can be identified and ranked through Technical Rule 126:

Vulnerability Score	CONDITIONS		
	Significant	Moderate	Low
6 (yellow)	-	✓	-
4 (green)	-	-	✓
2 (light green)	-	-	-



50 25 0 50 100 150 200  
Kilometres