

Cataraqui Source Protection Area

Significant Groundwater Recharge Area Assessment

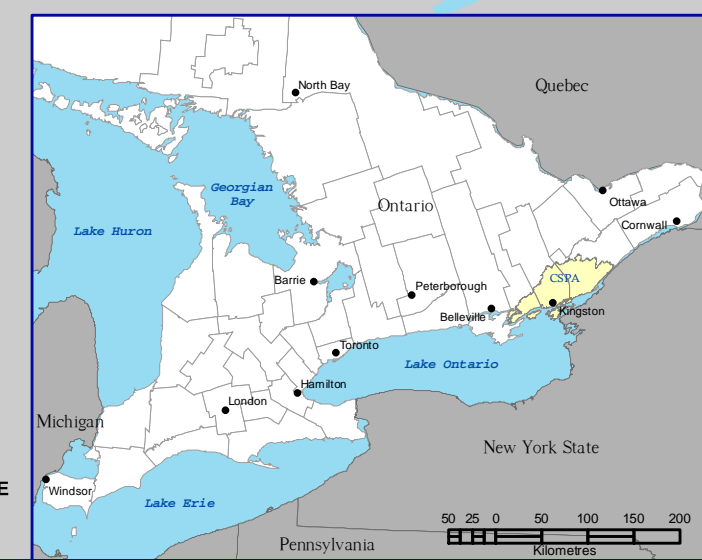
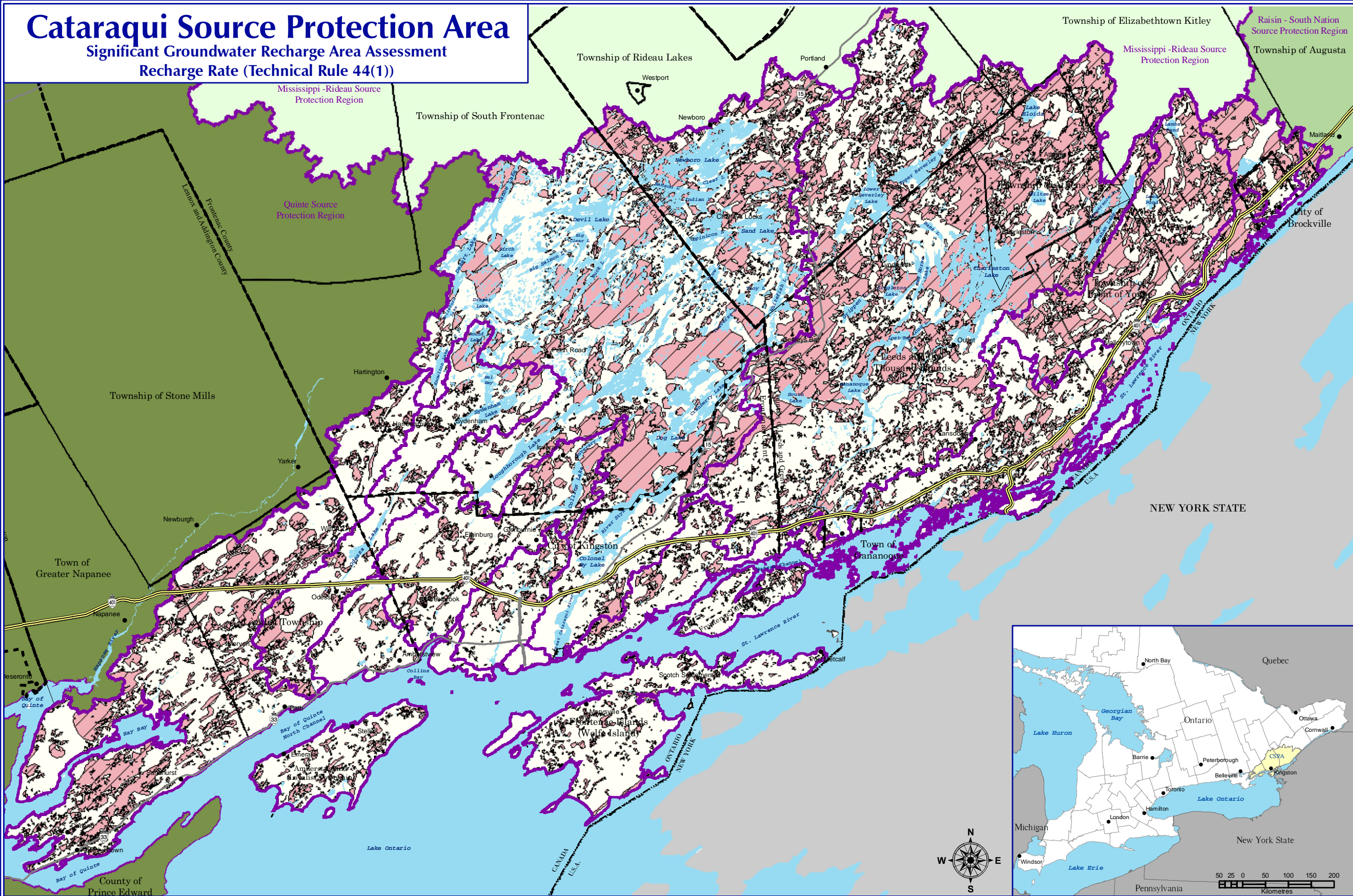
Recharge Rate (Technical Rule 44(1))

Map 5-6



Legend

- International Boundary
- Upper Tier Municipalities
- Lower Tier Municipalities
- Towns
- Watersheds Boundary
- Waterbodies
- Infiltration <math>< 1.15 \times \text{Average Annual Infiltration}</math>
- Infiltration >math>> 1.15 \times \text{Average Annual Infiltration}</math>



Created: August 20, 2009
 Printed: February 23, 2011

Scale 1:330,000

0 1.5 3 6 9 12
 Kilometres

Universal Transverse Mercator Projection
 North American Datum 83

August 2008

CATARAQUI
 Source Protection Area

This map was funded by the Ontario Government, and the Ministry of Environment, Produced by the Cataraqui Region Conservation Authority under license with the Ontario Ministry of Natural Resources © Queen's Printer for Ontario, 2005. Aerial Photography © Group Alta, 2008.

The CRCA makes every effort to insure that the information presented is accurate for the intended uses of the map. There is an inherent error in all mapping products, and accuracy of the mapping cannot be guaranteed for all possible uses. All end-users must therefore determine for themselves if the information is suitable for their purposes.

Y:\Base Data\Source Water\Maps\Assessment Report\Chapter 5\SGRA Assessment Recharge Rate TR 44(1)