

# Cataraqui Source Protection Area

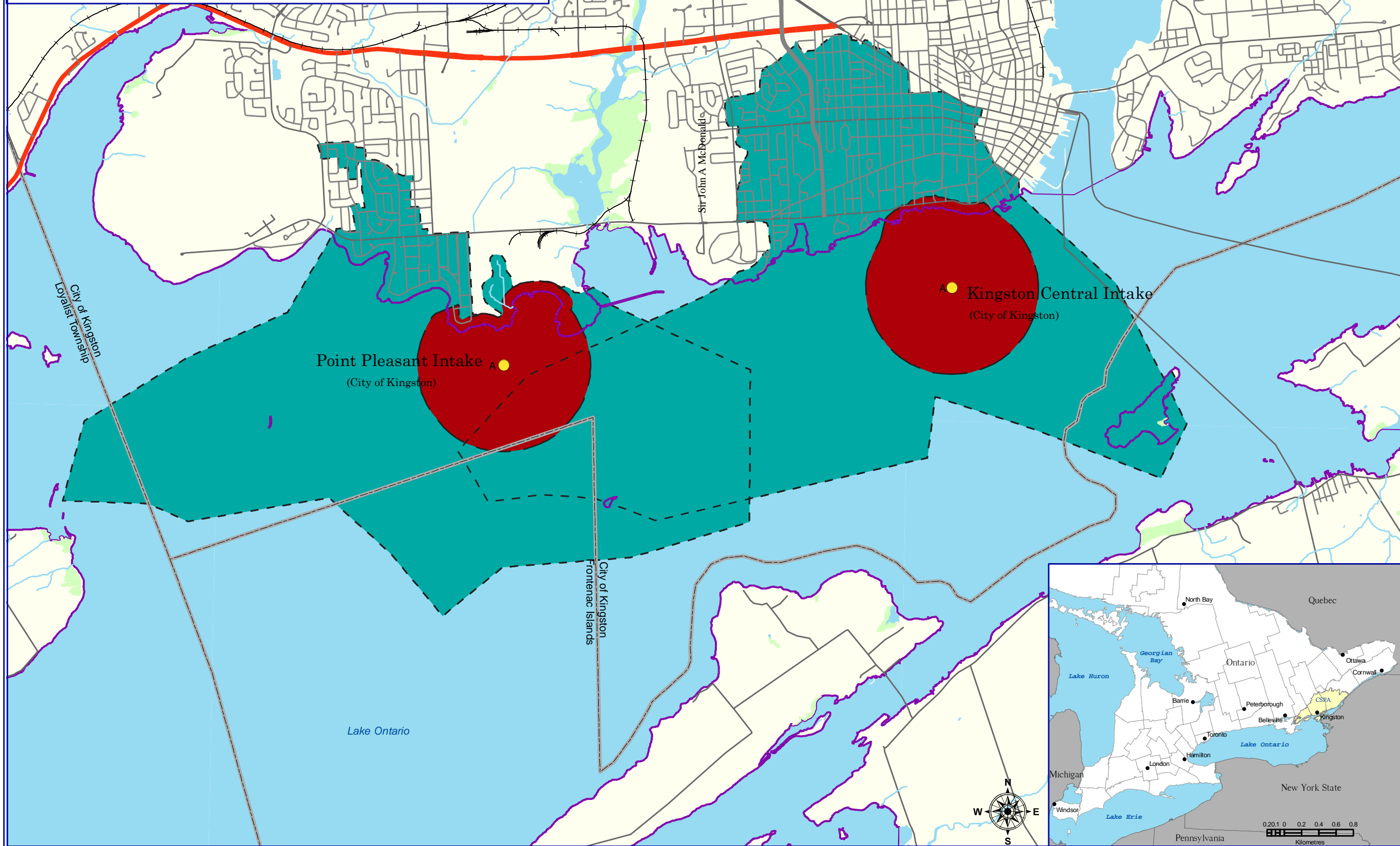
## Point Pleasant & Kingston Central IPZs

# Map 6-24a



- Legend**
- Drinking Water Intake
  - Cataraqui Source Protection Area
  - Railway
  - Freeway
  - Expressway / Highway
  - Collector
  - Watercourses
  - Waterbodies
  - Wetlands

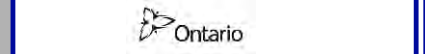
- Intake Protection Zones**
- IPZ - 1
  - IPZ - 2



\* Note: All intakes have been classified into the below categories:  
 Intake - Type A (Great Lakes)  
 Intake - Type B (Connecting Channels)  
 Intake - Type C (Rivers)  
 Intake - Type D (Lakes and Dammed Rivers)

Created: August 20, 2009  
 Printed: February 23, 2011

Scale 1:45,000  
 0 0.2 0.4 0.8 1.2 1.6  
 Kilometres  
 Universal Transverse Mercator Projection  
 North American Datum 83



This map was funded by the Ontario Government, and the Ministry of Environment, Produced by the Cataraqui Region Conservation Authority under license with the Ontario Ministry of Natural Resources © Queen's Printer for Ontario, 2005.

Aerial Photography © Group Alta, 2008.

The CRCA makes every effort to ensure that the information presented is accurate for the intended uses of the map. There is an inherent error in all mapping products, and accuracy of the mapping cannot be guaranteed for all possible uses. All end-users must therefore determine for themselves if the information is suitable for their purposes.

V:\Base Data\Source Water\Maps\Assessment Report\Chapter 6\Map 6-24a PP & KC Vulnerability Scoring



0.2 0.1 0 0.2 0.4 0.6 0.8  
 Kilometres