

Cataraqui Source Protection Area

Fairfield IPZs - Locations where conditions can be significant, moderate, or low

Map 6-35



Legend

- Drinking Water Intake
- Cataraqui Source Protection Area
- Railway
- Freeway
- Expressway / Highway
- Collector
- Watercourses
- Waterbodies
- Wetlands

Intake Protection Zone Vulnerability Scoring

- 7 IPZ - 1
- 6.3 IPZ - 2

Note: All lands and waters that lay within an intake protection zone boundary line form part of that zone, including waterbody areas that are shown on the map in blue.

* Note: All intakes have been classified into the below categories:
 Intake - Type A (Great Lakes)
 Intake - Type B (Connecting Channels)
 Intake - Type C (Rivers)
 Intake - Type D (Lakes and Dammed Rivers)

Created: August 20, 2009
 Printed: February 23, 2011

Scale 1:30,000

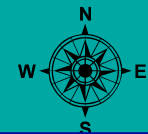
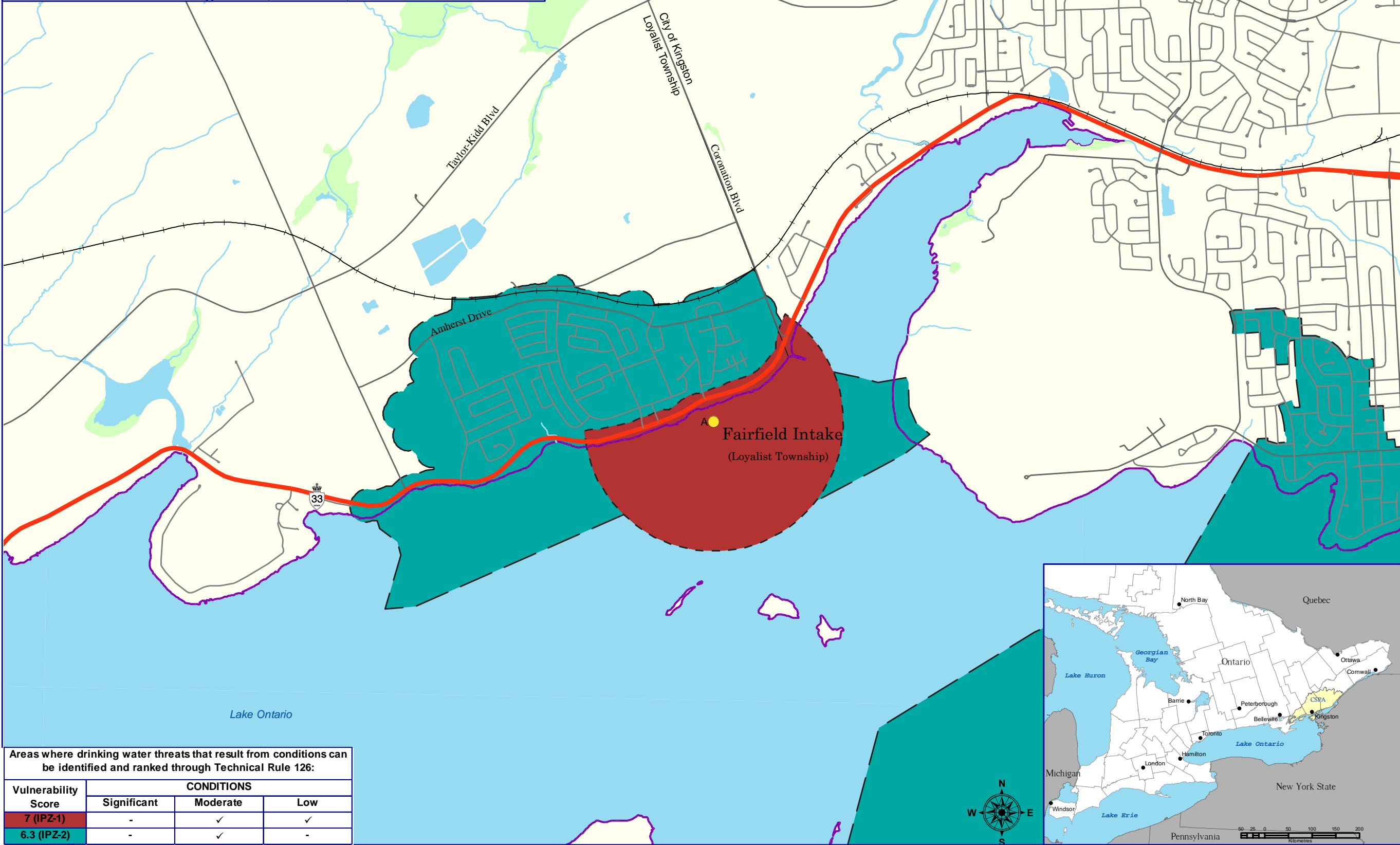
 Universal Transverse Mercator Projection
 North American Datum 83



This map was funded by the Ontario Government, and the Ministry of Environment, Produced by the Cataraqui Region Conservation Authority under license with the Ontario Ministry of Natural Resources © Queen's Printer for Ontario, 2005. Aerial Photography © Group Alta, 2008.

The CRCA makes every effort to insure that the information presented is accurate for the intended uses of the map. There is an inherent error in all mapping products, and accuracy of the mapping cannot be guaranteed for all possible uses. All end-users must therefore determine for themselves if the information is suitable for their purposes.

Y:\Base Data\Source Water\Maps\Assessment Report\Chapter 7\Map 6-35 Fairfield IPZs_1_02_09.mxd www.crcra.on.ca



Areas where drinking water threats that result from conditions can be identified and ranked through Technical Rule 126:

Vulnerability Score	CONDITIONS		
	Significant	Moderate	Low
7 (IPZ-1)	-	✓	✓
6.3 (IPZ-2)	-	✓	-